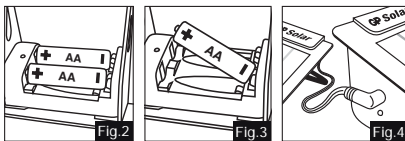
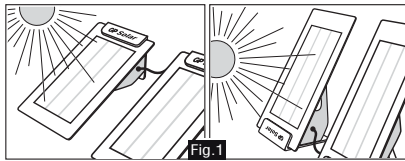


GP Solar

Instruction Manual



Charging Time*

GP Battery	Typical Capacity	Time
GP ReCyko+ AAA	820mAh	~ 2.5-hr
GP ReCyko+ AA	2050mAh	~ 6.5-hr
GP NiMH AAA	800mAh	~ 2.5-hr
GP NiMH AA	1600mAh	~ 5-hr

* Charging rate will depend on the intensity of sunlight, orientation towards the sun and different battery capacities. To maximize the charging performance, move the GP Solar charger and the additional solar panel from time to time according to the movement of the sun. If the additional solar panel is not connected, the charging time will be extended. Do not overcharge the batteries (Refer to the Charging Time Table).

Charger Features

- Clean power and environmentally friendly
- Compact and lightweight
- Durable
- Charge GP ReCyko+ or NiMH batteries with the solar panel under sunlight
- Additional solar panel is included to speed up the charging time
- 2 pcs of GP ReCyko+ AA can be charged within one day under strong direct sunlight
- The solar panel can be placed vertically or horizontally, directly towards the sun. (Fig.1)

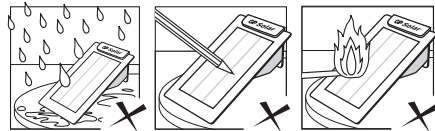
Charging Instructions

1. Charge GP ReCyko+ or NiMH batteries in pairs. 2 pcs of AAA or 2 pcs of AA can be charged at the same time. Charger will not function with only one battery. (see Fig. 2)
2. Insert GP ReCyko+ or NiMH batteries into GP Solar charger according to the battery polarity. Avoid reverse charging. (see Fig. 3)
3. Connect the additional solar panel with the solar charger. (see Fig. 4)
4. Find a suitable sunny location. Place GP Solar charger with the additional solar panel under direct sunlight and select the best angle directing towards the sun. (see Fig. 1)
5. It is recommended to charge batteries in outdoor area on sunny day. In North Hemisphere, the solar charger should be pointed to the SOUTH. In South Hemisphere, the solar charger should be pointed to the NORTH.
6. The red LED indicator on the solar charger will remain on during charging and will turn off automatically when batteries are removed or there is no sunlight.
7. It is recommended to take GP Solar charger and the additional solar panel back to indoor after charging or sunset in order to keep away from rain or moisture.

GP ReCyko+ is a new generation rechargeable battery which is pre-charged and ready to use upon purchase. After used, GP ReCyko+ could be recharged with GP Solar charger, GP ReCyko+ charger or GP PowerBank.

Precautions

1. DO NOT expose to rain, snow or moisture.
2. Charge only NiMH type of rechargeable batteries.
3. Do not charge non-rechargeable batteries.
4. Never use any extension cord or attachment not recommended by GP.
5. Do not wet, incinerate or disassemble the charger and batteries.
6. Do not put near fire.
7. Do not scratch the solar panel.
8. Do not charge batteries inside a car or in other locations without good ventilation, as high temperature may cause batteries to be overheated.
9. Charging performance may be affected by temperatures below 0°C or above 45°C.
10. Use a damp cloth to clean the charger. Do not immerse into water.



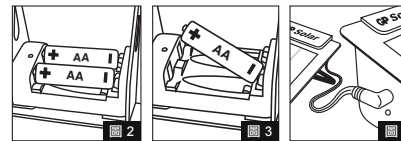
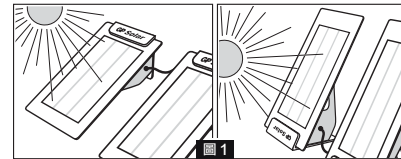
Technical Details

Rated output voltage	: 4.2V (charger)
	: 4.2V (panel)
Rated output current	: 300mA under direct sunlight
	(charger connected with additional panel)
Dimension	: 180 x 110 x 60 mm (charger)
	: 180 x 110 x 22 mm (panel)
Weight	: 110g (charger)
	: 92g (panel)

Do not dispose of electrical appliances as unsorted municipal waste, use separate collection facilities. Contact your local government for information regarding the collection systems available. If electrical appliances are disposed of in landfills or dumps, hazardous substances can leak into the groundwater and get into the food chain, damaging your health and well-being.

GP 太陽能充電寶

說明書



充電時間*

型號	容量	時間(小時)
GP ReCyko+ AAA	820mAh	~ 2.5
GP ReCyko+ AA	2050mAh	~ 6.5
GP NiMH AAA	800mAh	~ 2.5
GP NiMH AA	1600mAh	~ 5

* 充電時間會因應日光的強弱，太陽光的方向以及充電電池的容量而有所不同。為達最佳充電效果，請因應太陽光的方向移動 GP 太陽能充電寶及附加的太陽能接收板的位置。當 GP 太陽能充電寶沒有接上附加的太陽能接收板時，充電時間將會延長。請勿將充電電池過充（請參閱充電時間表）。

GP 太陽能充電寶特點

- 潔淨的可再生能源，有助保護環境
- 外形輕巧
- 質料耐用
- 在太陽光下可充 GP ReCyko+ 或 GP NiMH 鎳氫充電電池
- 接上附加的太陽能接收板可縮短充電時間
- 在陽光直接照射下，可於 1 天內充滿 2 粒 GP ReCyko+ 或 GP NiMH 鎳氫 AA 充電電池（請參閱充電時間表）
- 太陽能接收板可以直向或橫向放置以便接收太陽光（圖 1）

請於使用前詳細閱讀此說明書，並保留作參考。

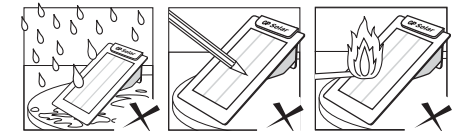
操作指示

1. 每次必須同時為 2 粒 GP ReCyko+ 或 GP NiMH 鎳氫 AA 或 AAA 充電電池充電（圖 2）。
2. 把 GP ReCyko+ 或 GP NiMH 鎳氫充電電池按照正負 (+/-) 極方向放入 GP 太陽能充電寶內，以免倒充（圖 3）。
3. 把附加的太陽能接收板連接到 GP 太陽能充電寶（圖 4）。
4. 把 GP 太陽能充電寶連附加的太陽能接收板置於太陽光直接照射處（圖 1）。
5. 建議於陽光充足的日子把 GP 太陽能充電寶連附加的太陽能接收板置於室外充電。在北半球的地區，請把 GP 太陽能充電寶連附加的太陽能接收板面向南方；在南半球的地區，則面向北方。
6. 充電進行時紅色 LED 燈會持續亮起。當充電寶接收不到太陽光或電池被取出時，LED 燈會自動熄滅。
7. 充電完成後或於晚間請把 GP 太陽能充電寶及附加的太陽能接收板放回室內，避免雨水或潮濕。

GP ReCyko+ 新一代環保充電電池，出廠前經已充電，故首次使用毋須充電，可以即買即用。GP ReCyko+ 適用於 GP 太陽能充電寶，GP ReCyko+ 充電器及 GP 超霸充電寶。

注意事項

1. 切勿將 GP 太陽能充電寶及太陽能接收板置於下雨，下雪，或潮濕的環境中。
2. GP 太陽能充電寶只可為鎳氫充電電池充電。
3. 切勿使用 GP 太陽能充電寶為其他種類電池（例如鹼性電池、鹼性充電電池、碳鋅電池、鋅電池以及未有列出的其他類別電池）充電，因可能會引起電池漏液或爆裂，導致受傷。
4. 切勿使用其他非 GP 建議的配件，以免導致火警、觸電或受傷。
5. 切勿沾濕，燃燒或拆解 GP 太陽能充電寶，太陽能接收板及充電電池。
6. 切勿將 GP 太陽能充電寶及太陽能接收板接近火源。
7. 切勿刮花太陽能充電寶及太陽能接收板。
8. 切勿於車廂內或空氣不流通的環境進行充電，因高溫環境會導致充電電池過熱。
9. 於溫度低於 0°C 或高於 45°C 的環境下使用 GP 太陽能充電寶，充電時間會有所影響。
10. 可用濕布輕抹 GP 太陽能充電寶及太陽能接收板，切勿將兩者置於水中盪洗。



規格

額定輸出電壓	: 4.2V (充電器) / 4.2V (太陽能接收板)
額定輸出電流	: 300mA (在陽光直接照射及 GP 太陽能充電寶與附加的太陽能接收板相連接的情況下)
尺寸	: 180 x 110 x 60mm (充電器)
	: 180 x 110 x 22mm (太陽能接收板)
重量	: 110g (充電器) / 92g (太陽能接收板)

於香港購買憑發票保用 1 年
(香港)查詢熱線: (852)2420 0281